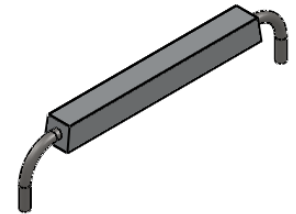


NOTES:

1. Net Weight: 178.0 Kg
2. Gross Weight: 214.0 Kg
3. Insert Weight: 36.0 Kg
4. Insert quality:
Plate, bar sections: EN10025
grade S235 or S275
5. Insert Welding
All fabrication of steel
insert are according EN 10287
and EN 10288
6. Insert surface preparation
For aluminium anodes
minimum quality
ISO 8501-1 SA2 1/2
7. Electrochemical properties
according to DNV-RP-B401
8. All dimensions are in mm



No	DATE	REVISION	REV/CHK	APPR

ANOTEC bvba
 Brusselsestraat 49
 1750 Lennik , Belgium

DRAWING NAME:

ANODE GENERAL DESCRIPTION

ANODE TYPE:

ASOE1780

anotec

SACRIFICIAL ANODES

DESIGNED	P. P.	BELONGS	E. P. E.
STUDIED		PAGE	1/1
APPROVED		SCALE	1:12
DRAWING NUMBER	DATE	5.5.2015	
	CODE		